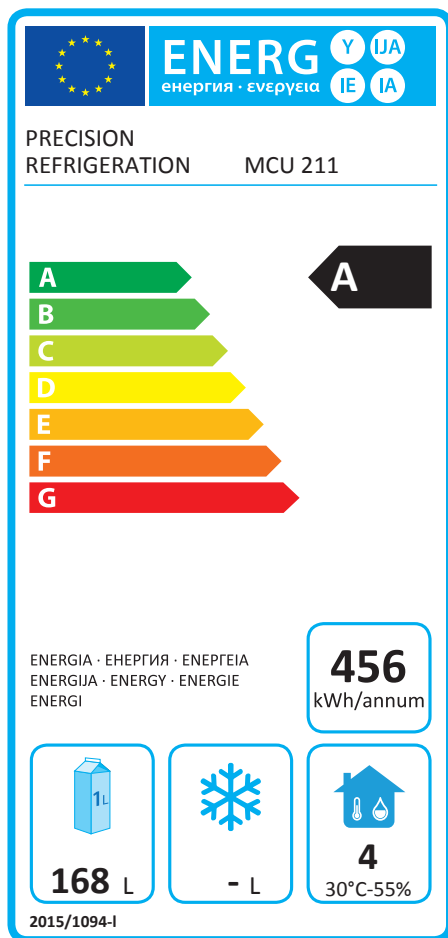


A BRIEF GUIDE TO MEPS

MINIMUM ENERGY PERFORMANCE STANDARD



MINIMUM ENERGY PERFORMANCE - MEPS



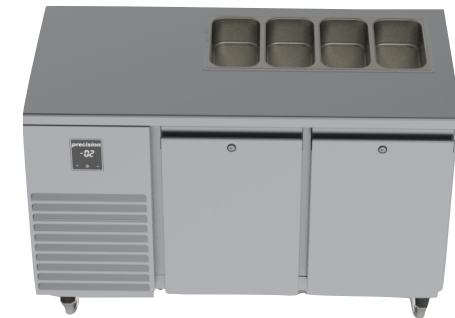
- Mandatory For All Manufacturers Of Professional Refrigerators And Freezers Selling Products Within EU Member States From July 2016
- Products Are Temperature & Energy Performance Tested To New EN16825 Standard
- All Products Must Be Energy Labelled And Have A Minimum Rating Of G
- Policed By National Measurement Office Across Europe

WHICH PRODUCTS ARE AFFECTED?

“PROFESSIONAL REFRIGERATED STORAGE CABINETS”

ALL PRECISION’S PRODUCTS (AND VARIANTS SUCH AS DRAWER CONFIGURATIONS) EXCEPT:

- Blast Chiller/Freezers - *Coming Soon*
- Bottle Coolers - *Coming Soon*
- Bakery Retarder Provers
- Cabinets With Water Cooled Condensers
- Remotes
- Open Cabinets (Grab & Go)
- Pan Wells , Saladettes And Prep Tables With Open Tops
- Chest Freezers
- Roll-In Cabinets
- Pass-Thru Cabinets
- Custom One Offs
- Static Air Cabinets
- Refrigerator/Freezers
- Serve Over Cabinets (Deli Cases)

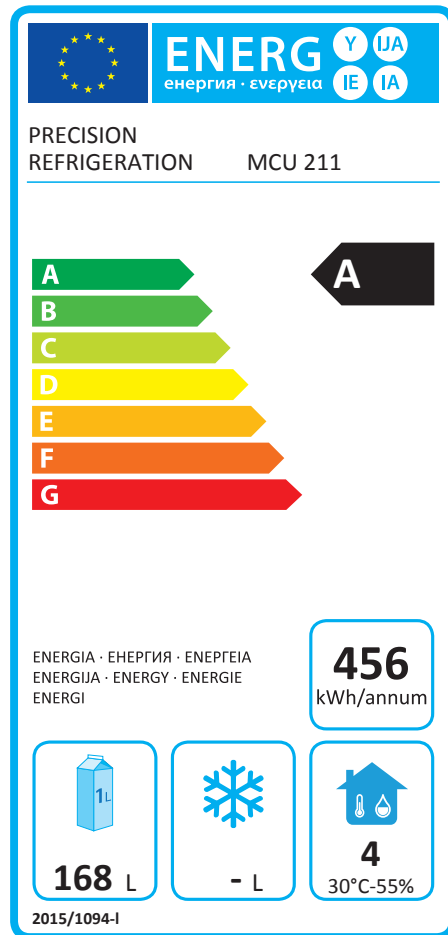


SO WHAT IS EN16825 - THE TEST?

- 48 hour test in a climate controlled test chamber at 30°C ambient with 55% humidity (Climate Class 4)
- Cabinet loaded with special test packs to simulate food
- Door(s) (and/or drawers) are opened during a 12 hour period for 7 seconds every 10 minutes on refrigerators. On freezers, they are opened during a 4 hour period rather than 12
- If the temperature of test packs deviate from +5 / -1°C for refrigerators and -15 / -18°C for freezers, the cabinet has failed.
- The energy consumption is recorded in kW from the second 24 hour test period which is then multiplied by 365 to get Annual Energy Consumption (AEC).
- Energy Efficiency Index (EEI) is then calculated based on a set equation taking into account the AEC, two coefficients depending on if its a counter, upright, refrigerator or freezer and the Net Usable Volume of the cabinet.
- The resulting EEI figure then determines the Energy Efficiency Class of the product which is the A / G rating.



WILL EVERY PRODUCT BE LABELLED "A"



- No...It's A Tough Test
- New MEPS Compliant Products Look Similar But Nearly Every Component Has Changed Behind The Scenes
- Bands Will Be Tightened In Time To Eliminate Worst Performing Products
- Many Future Product Innovations To Come To Maintain Top Ratings